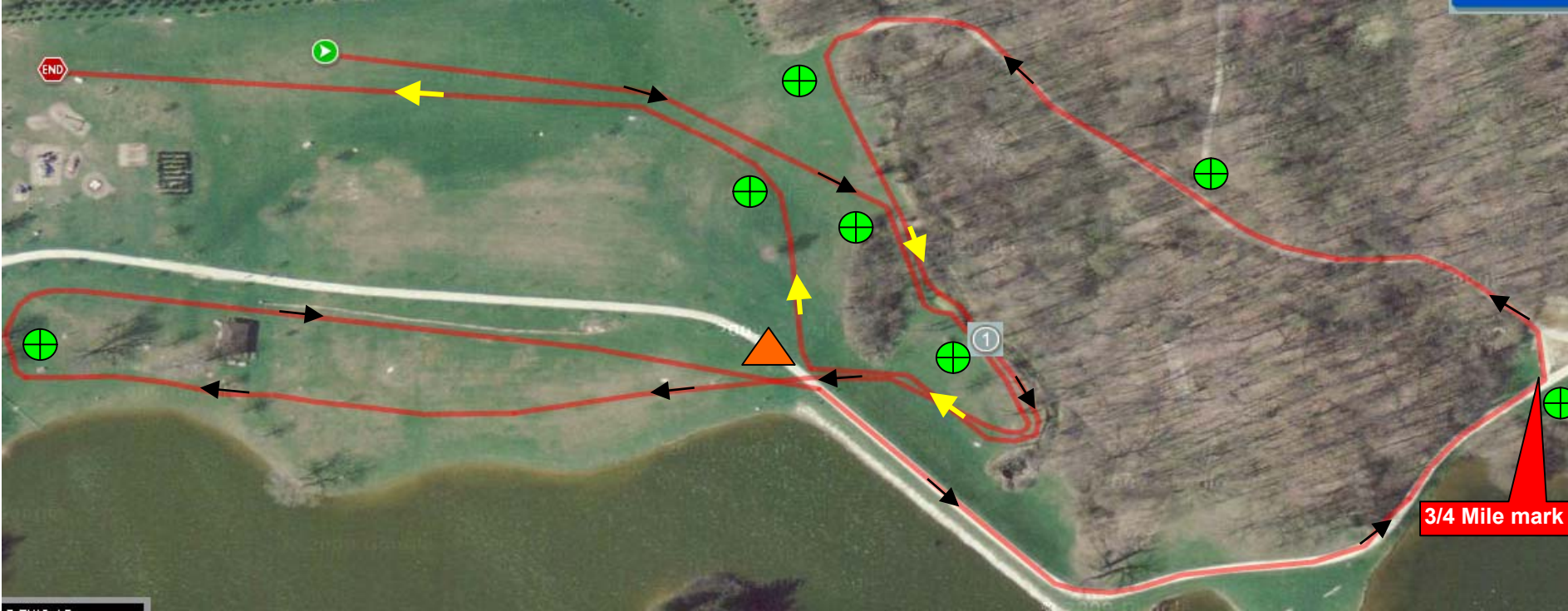


2000 Meter Course



⊕ Course Clerk

▲ Lead Course Clerk

\*YELLOW (LIGHT) ARROWS INDICATE SECOND & POSSIBLE DUPLICATE PORTIONS OF COURSE

\*NOTE - ALL RACES ARE THE SAME FOR THE FIRST 3/4 MILE

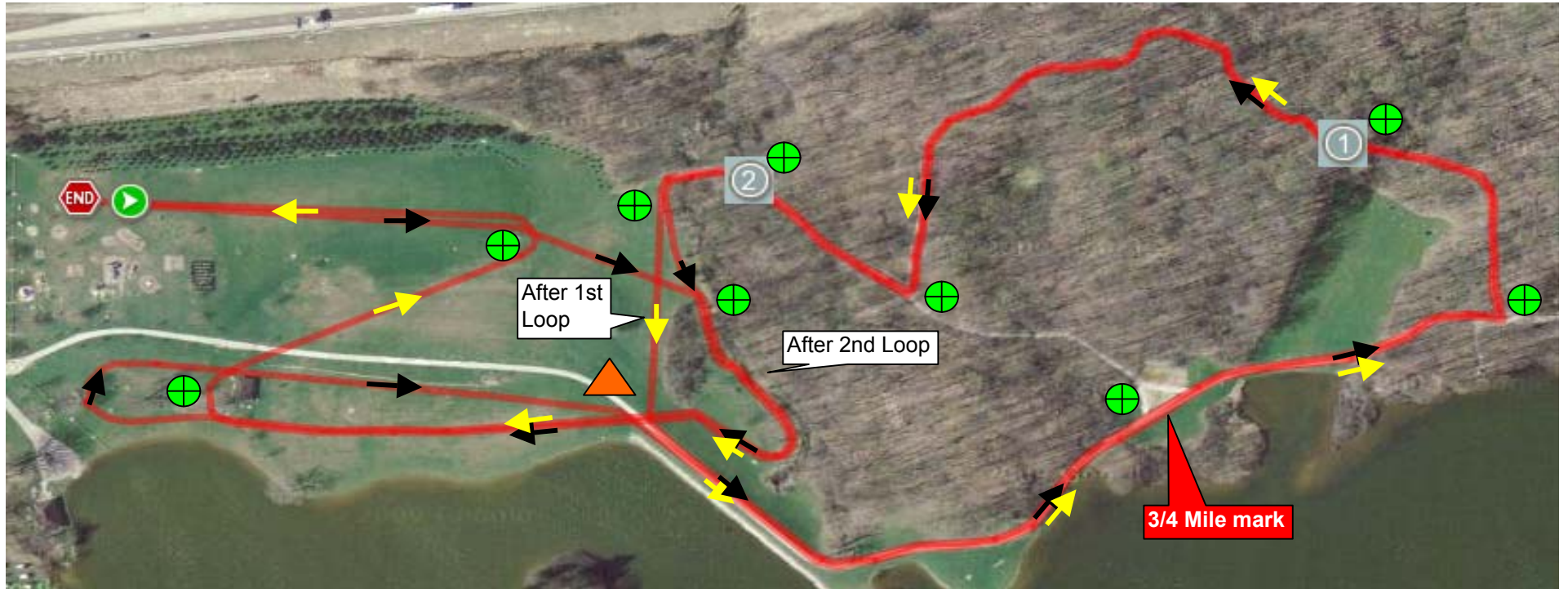
3000 Meter Course



-  Course Clerk
  -  Lead Course Clerk
- \*YELLOW (LIGHT) ARROWS INDICATE SECOND PORTION OF COURSE**
- \*NOTE - ALL RACES ARE THE SAME FOR THE FIRST 3/4 MILE**



## 4000 Meter Course



 Course Clerk

 Lead Course Clerk

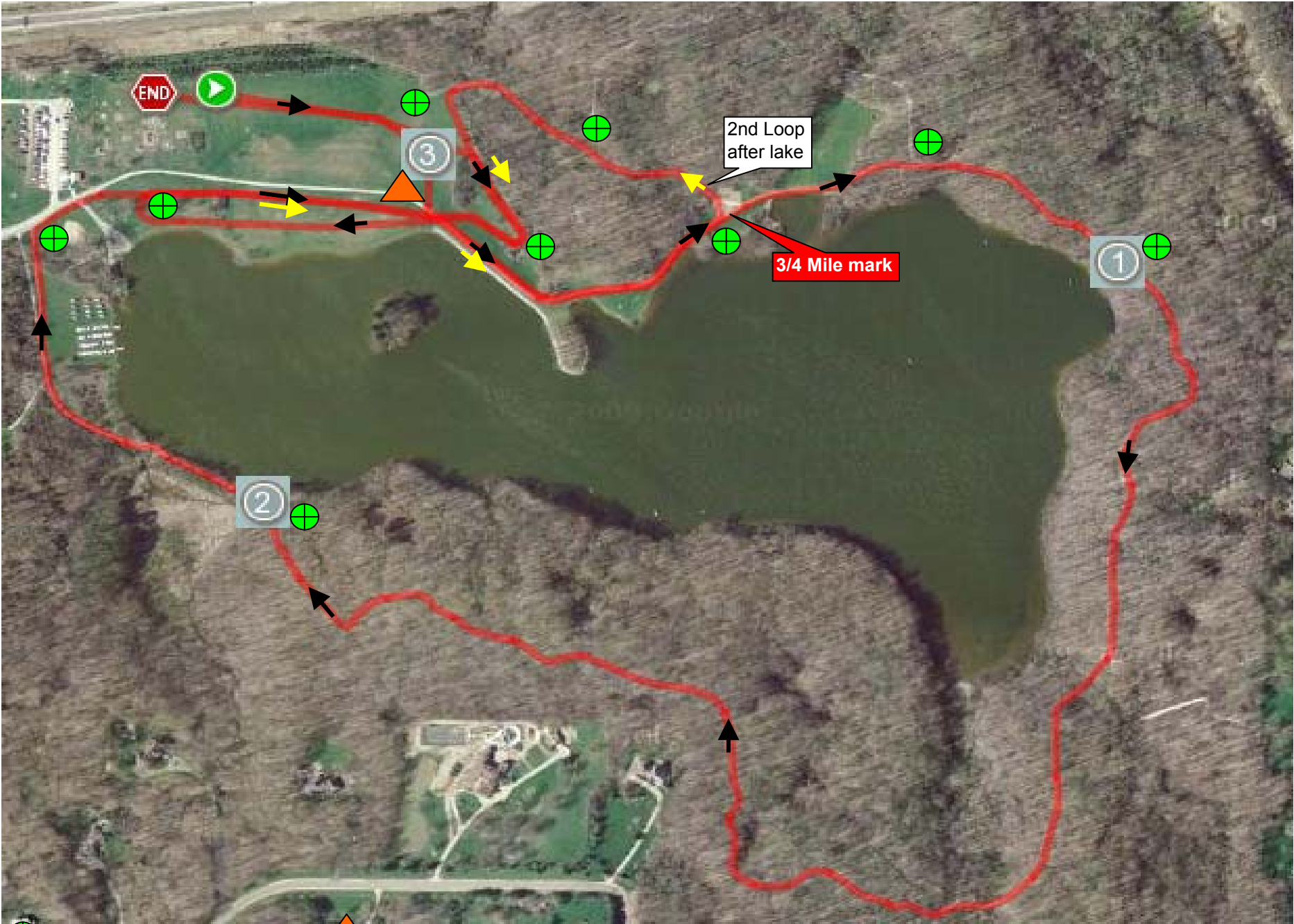
The first 3/4 of a mile on this course is the same as all other courses


Black arrows indicate first part of course

Yellow arrows indicate second portion of course

**\*NOTE - ALL RACES ARE THE SAME FOR THE FIRST 3/4 MILE**

5000 Meter Course



 Course Clerk

 Lead Course Clerk

**\*5000 METER COURSE IS DUPLICATE TO THE 2000 METER COURSE WITH A LARGE LOOP AROUND THE LAKE IN THE MIDDLE.**

**\*NOTE - ALL RACES ARE THE SAME FOR THE FIRST 3/4 MILE**